

Treo™ 650

smartphone

Using Dial-up Networking

palmOne™

Copyright and Trademark

© 2004 palmOne, Inc. All rights reserved.

palmOne, Treo, the palmOne and Treo logos, Palm, Palm OS, HotSync, Palm Powered, and VersaMail are among the trademarks or registered trademarks owned by or licensed to palmOne, Inc. A portion of this software includes software modules developed by the Independent JPEG group. All other brand and product names are or may be trademarks of, and are used to identify products or services of, their respective owners.

palmOne, Inc. uses the Bluetooth wireless technology trademark under express license from Bluetooth SIG, Inc.

Disclaimer and Limitation of Liability

palmOne, Inc. assumes no responsibility for any damage or loss resulting from the use of this guide.

palmOne, Inc. assumes no responsibility for any loss or claims by third parties which may arise through the use of this software. palmOne, Inc. assumes no responsibility for any damage or loss caused by deletion of data as a result of malfunction, dead battery, or repairs. Be sure to make backup copies of all important data on other media to protect against data loss.

Table of Contents

Chapter 1: Using Dial-up Networking	1
Creating a trusted pair between your smartphone and your computer.....	2
Setting up your computer for a DUN connection	5
Enabling DUN on your smartphone	9
Accessing the Internet from your computer	10
Terminating an Internet session	12
Chapter 2: Common Questions	14

Using Dial-up Networking

In this chapter

[Creating a trusted pair between your smartphone and your computer](#)

[Setting up your computer for a DUN connection](#)

[Enabling DUN on your smartphone](#)

[Accessing the Internet from your computer](#)

[Terminating an Internet session](#)

If your computer is enabled with Bluetooth® wireless technology, you can use your Treo™ 650 smartphone as a wireless modem to access the Internet from your computer. You can browse the web or download email on your computer when you are away from your desk—for example, when you are at an airport.

Dial-up networking (DUN) is the feature that converts your smartphone into a wireless modem. To use DUN, you must set both your phone's and your computer's Bluetooth settings to On and form a trusted pair between your computer and your smartphone.

You must have a data services plan with your wireless service provider to use your smartphone as a wireless modem for your computer.

[!] Before You Begin

Make sure that your computer's Bluetooth setting is on and that your computer is discoverable. Check the documentation that came with your computer to find and change these settings.

Check with your wireless service provider to obtain your data services (GPRS) username, password, and APN information.



+ Did You Know?

If your computer is not enabled with Bluetooth wireless technology, you may be able to purchase a wireless Bluetooth adapter accessory for your computer so that you can use your smartphone as a modem with dial-up networking.

Creating a trusted pair between your smartphone and your computer

After you have turned on the correct settings for your smartphone and your computer, you need to pair the two devices before you can use DUN. You need to do this only once; after creating the trusted pair, you can use your smartphone as a modem any time it is within range of your computer.

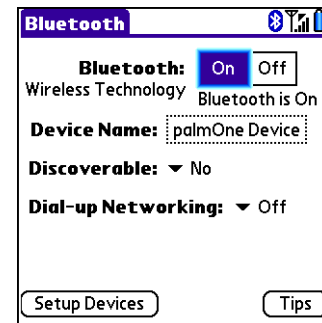
1

Go to Applications  and select Bluetooth .

2

Select On if it is not selected, and then select Setup Devices.

 Continued



» Key Term

Trusted pair Two devices—for example, your handheld and your smartphone—that can connect to each other because each device can find the same passkey on the other device. Once you form a trusted pair with a device, you do not need to enter a passkey to connect with that device again.

3

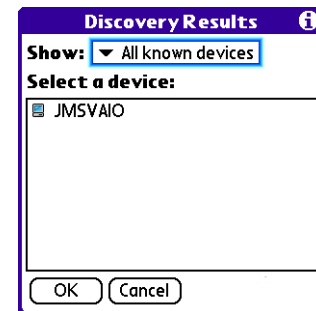
Select Trusted Devices.



4

Select Add Device. The Discovery icon appears, indicating that the discovery process is active.

» Continued

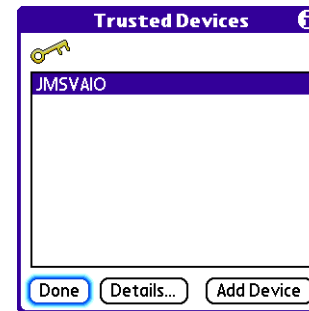


*** Tip**

If your computer does not appear in the Trusted Devices list even after you select Find More, double-check the computer's Bluetooth and discoverable settings. Check your computer's or Bluetooth adapter's documentation for help in locating and changing these settings.

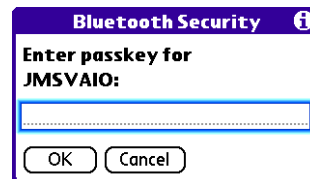
5

Select your computer from the Trusted Devices list, and then select Done.

**6**

Enter a passkey on the Bluetooth Security screen and select OK. The passkey can be any number you choose.

NOTE We recommend that you use at least four digits in your passkey.

**7**

Enter the same passkey number on your computer when prompted.

8

Select Done, and then select Done again to return to the Bluetooth screen.

↓ Done

Setting up your computer for a DUN connection

After you have created the trusted pair between your computer and your smartphone, you need to configure the Bluetooth modem settings on your computer. You need to do this only once.

NOTE Some wireless service providers provide customized software programs that walk you through the DUN setup process. Check with your provider to see if such a program is available.

To set up your computer, you need the following:

- The username and password you use to access the Internet through your wireless service provider's data (GPRS) network
- your wireless service provider's APN

Check with your service provider or the documentation that came with your service plan for these settings.

NOTE The screens that appear when you set up your computer may differ from the ones shown in the following procedure, depending on your computer model and operating system. Check your computer's documentation to determine the equivalent screens.

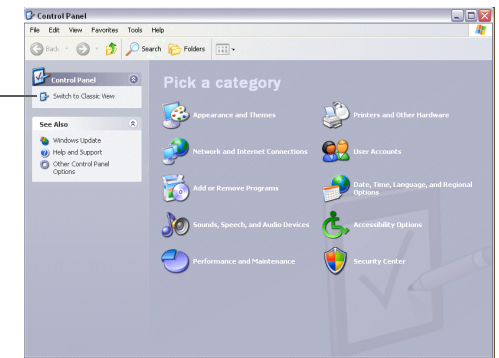
1

On your computer, open the Start menu, and then click Control Panel.

2

[&] **OPTIONAL** For Windows XP, click Switch to Classic View.

Click here

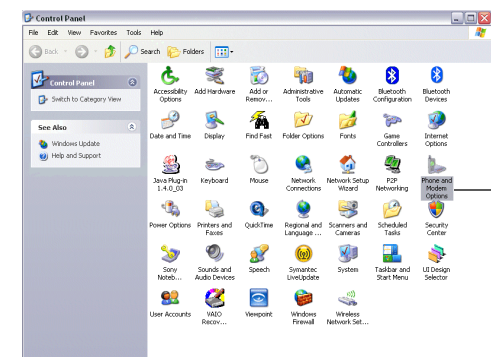


3

Click Phone and Modem Options.

NOTE You may be asked to enter a location for your modem. If so, enter the area code for your wireless phone number.

➤ **Continued**

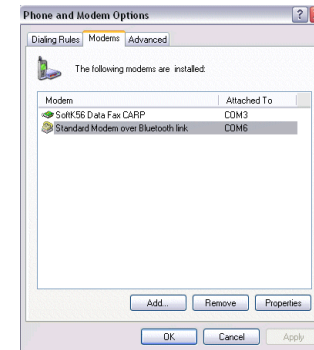


Click here

- * **Tip**
The Bluetooth modem is listed differently for different computers; just look for the modem that contains the word “Bluetooth.”

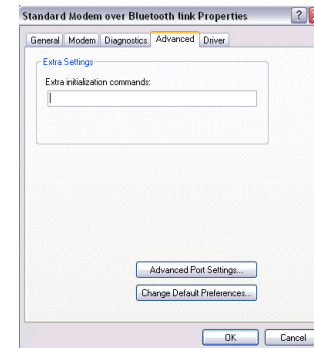
4

Click the Modems tab and select the Bluetooth modem.

**5**

Click Properties, and then click the Advanced tab.

➤ **Continued**



*** Tip**

Depending on your wireless service provider, you may be able to locate the APN information on your smartphone. Go to Applications, select Prefs, and then select Network. If the APN information is displayed on the Network Prefs screen, this should be the correct info to enter on your computer. Check with your wireless service provider to be sure.

6

Enter the following in the Extra initialization commands field:

AT+CGDCONT=1, "ip", "XXX"

where XXX is the APN information for your wireless service provider. This information is different for all providers.

NOTE Be sure to enter the text exactly as it appears, including commas and quotations marks.

7

Click OK on each screen until you have exited Phone and Modem options.

8

Close the Control Panel.



↓ Done

Your computer is now ready to make a DUN connection with your smartphone. Follow the next two procedures each time you want to use your smartphone as a modem from your computer.

Enabling DUN on your smartphone


[!] IMPORTANT When DUN is enabled on your smartphone, you cannot access the Internet directly or use the Bluetooth capabilities for wireless synchronization or hands-free calling. Keeping DUN enabled also drains your smartphone's battery more quickly. Be sure to turn off DUN on your smartphone when your Internet session is finished.

1

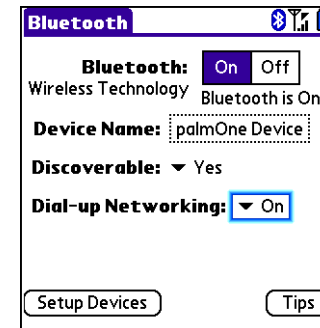
Go to Applications  and select Bluetooth .

2

Select the Dial-up Networking pick list and select On.

NOTE When DUN is successfully enabled, the following icon appears: . Select OK on the warning screen that appears to remind you to stop the Internet session on your computer.

 Done



- + **Did You Know?**
Depending on your computer, paired devices might be referred to as trusted devices or bonded devices, or some other term might be used.

Accessing the Internet from your computer

[!] **IMPORTANT** The steps for accessing the Internet on your computer may vary depending on your operating system and how Bluetooth wireless technology is set up on your computer—for example, whether it is built-in versus whether you are using a wireless Bluetooth adapter. If the following procedure does not work with your computer, check your computer's documentation for how to set up Bluetooth technology to access the Internet using a DUN connection.

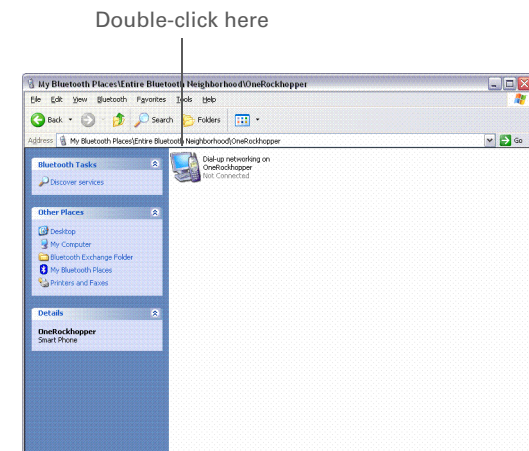
1

Open the Bluetooth panel on your computer and look for the option for paired devices. Check your computer's documentation for how to bring up this screen and the name of the paired devices option.

2

Double-click the icon or option representing your smartphone. Your computer connects to your smartphone and shows that DUN services are available.

➤ **Continued**



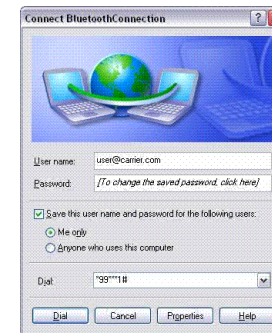
* **Tip**
You can save your username and password so that they are automatically filled in each time you create a DUN connection.

3

Double-click the DUN service icon.

4

Enter the username and password information required to access the data (GPRS) network from your wireless service provider. For some providers, you can leave these fields blank. Check with your provider for this information.

**5**

Enter the following in the Dial field:

991#**

NOTE You may be asked if you want to remember this dial text for this connection. We recommend that you choose to remember the dial text to avoid errors and the inconvenience of entering it for every session.

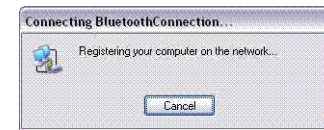
↘ **Continued**

*** Tip**

Always remember to disable DUN on your smartphone when you're finished using the Internet connection from your computer. When DUN is enabled, you cannot access the Internet directly from your smartphone or use the built-in Bluetooth wireless technology for hands-free calling and wireless synchronization. Keeping DUN enabled also drains your smartphone's battery more quickly.

6

Click Dial.



Once the connection is successfully established, you can browse the Internet on your computer or download your email.

NOTE You may need to use a virtual private network (VPN) to access corporate email. Check with your system administrator for information.

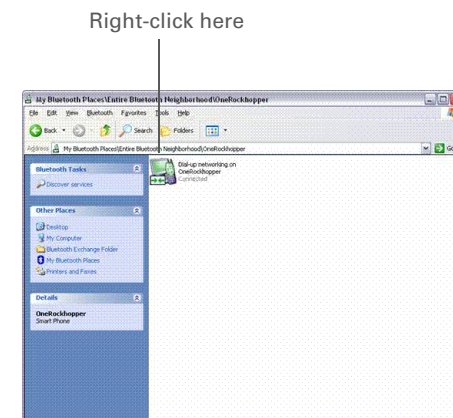
Terminating an Internet session

To terminate an Internet session, first disconnect from DUN on your computer, and then turn DUN off on your smartphone.



1

On your computer, right-click the icon or option representing your smartphone, and then click Disconnect.

➤ Continued




2

On your smartphone, go to Applications  and select Bluetooth .

3

Select the Dial-up Networking pick list, and then select Off.

When the Bluetooth status icon  reappears at the top of the screen, you have successfully switched off DUN.

Common Questions

Although we can't anticipate all the questions you might have, this chapter provides answers to some of the most commonly asked questions.

[!] IMPORTANT To use your smartphone as a wireless modem for your computer, you need to subscribe to your wireless service provider's data plan. To learn about your choices and the most appropriate plan that meets your requirements, contact your service provider. Additional charges may apply for wireless service data plans.

Does using DUN affect my battery life?

Using DUN can drain your battery more quickly, as your smartphone uses more power when DUN is turned on. When you have finished your DUN session, you should turn off DUN in the Bluetooth application on your smartphone.

Can I receive or make calls during my DUN session?

Yes, but most dial-up networking connections have a time-out period. If you do not send or receive any information over your DUN connection for a time interval that exceeds the time-out period, the connection terminates.

Can I still use other Bluetooth features of my smartphone when DUN is on?

When DUN is on, you cannot pair with another device or discover another device. You can also not send or receive information wirelessly directly from your smartphone, browse the web, or send or receive email messages. You can use all the other features of your smartphone

What do I do if my computer does not appear on the Trusted Devices screen?

If you select Add Device and your computer does not appear on the list, first select Find More. If your computer still does not appear, make sure that the computer's Bluetooth setting is on and that the computer is discoverable. Check with your computer manufacturer for help with locating and changing these settings. After making sure your computer is set up correctly, select Find More on the Trusted Devices screen again.

What do I do if I get a message that there is an error creating a dial-up networking connection with my smartphone?

- Try pairing your smartphone with your computer again.
- Make sure that the DUN setting on your smartphone is on.

What do I do if get an Error 691 message?

This error usually is followed by a text message indicating that your username or password is incorrect. Check your username/password and try to connect again.

How do I know that I am connected?

Look for a network connection icon in the task bar at the bottom of your computer screen. If you have several network connection icons, move the cursor over them to find the Bluetooth network icon. To check the status of the connection, right-click the Bluetooth network icon.