

Handbook
for the
Palm HotSync[®] Mail Application

Copyright

Copyright © 2000 Palm, Inc. or its subsidiaries. All rights reserved. Graffiti, HotSync, and Palm OS are registered trademarks of Palm, Inc. or its subsidiaries. The HotSync logo, Palm, and the Palm logo are trademarks of Palm, Inc. or its subsidiaries. Other product and brand names may be trademarks or registered trademarks of their respective owners.

Disclaimer and Limitation of Liability

Palm, Inc. and its subsidiaries assume no responsibility for any damage or loss resulting from the use of this handbook.

Palm, Inc. and its subsidiaries assume no responsibility for any loss or claims by third parties which may arise through the use of this software. Palm, Inc. and its subsidiaries assume no responsibility for any damage or loss caused by deletion of data as a result of malfunction, dead battery, or repairs. Be sure to make backup copies of all important data on other media to protect against data loss.

Important: Please read the End User Software License Agreement with this product before using the accompanying software program(s). Using any part of the software indicates that you accept the terms of the End User Software License Agreement.

Contents

Chapter 1: Introduction

Managing desktop E-Mail away from your desk.....	1
Installing Mail.....	2

Chapter 2: Using the Mail Application

Opening Mail.....	4
Viewing e-mail items.....	4
Displaying full header information.....	5
Creating e-mail items.....	5
Looking up an address.....	7
Adding details to e-mail items.....	9
Setting a priority.....	9
Sending a blind carbon copy.....	10
Adding a signature to your e-mail item.....	10
Requesting confirmations.....	11
Storing e-mail to be sent later.....	12
Editing unsent e-mail.....	12
Draft e-mail.....	13
Filing e-mail.....	14
Deleting e-mail.....	15
Removing e-mail from the Deleted folder.....	15
Purging deleted e-mail.....	15
Message list options.....	16
Folders.....	16
Date column.....	16
Sorting the Message list.....	17
HotSync options.....	18
Creating special filters.....	19
Ignoring or receiving e-mail.....	20
Defining filter strings.....	21
High-priority e-mail.....	23
Truncating e-mail items.....	23
Mail menus.....	24
Message menus.....	24
Options menus.....	25

Index.....	26
-------------------	-----------

Chapter 1

Introduction

Welcome to Palm HotSync® Mail. You can use the Mail application on your handheld to read, reply to, compose, and delete e-mail from your desktop E-Mail application while you're away from your desk.

This handbook guides you through setting up and using the Mail application. For information on how to use the other applications on your handheld, see the handbook that came with your handheld.

Managing desktop E-Mail away from your desk



Mail lets you manage the e-mail that you send and receive through the E-Mail application on your desktop computer. You can read, reply to, compose, and delete e-mail on your handheld; but to send or receive e-mail, you must perform a HotSync® operation either directly or indirectly. Direct methods include placing your handheld in the cradle attached to your computer, or using infrared communications. Indirect methods include using an add-on modem.

The key to Mail is that it truly synchronizes the mail in the Inbox of your desktop E-Mail application with the mail on your handheld. For example, if you delete e-mail items from Mail, your next HotSync operation also deletes the e-mail items from your desktop E-Mail application, so you never have to delete e-mail items twice. Similarly, if you read an e-mail item on your handheld and leave it in your Inbox, your next HotSync operation marks it as read in your desktop E-Mail application.

In Mail, you can do the following:

- View, delete, file, and reply to incoming mail.
- Create outgoing e-mail items and drafts of e-mail items.
- Create simple or complex filters, which allow you to decide the type of e-mail that your handheld retrieves from your desktop E-mail application.
- Use your handheld to send and retrieve e-mail items from your desktop E-Mail application via the cradle or infrared communications.

Installing Mail

Your handheld supports a number of desktop E-Mail applications for Microsoft Windows, such as:

- Microsoft Exchange (version 5.0 or higher)
- QUALCOMM Eudora (version 3.0.1 or higher)
- Lotus cc:Mail (6.0 or higher)
- Microsoft Outlook 97 (or higher)
- Microsoft Outlook Express
- Netscape Communicator (version 4.5 or higher)

You can see the full list of supported applications when you install and set up Mail. If your desktop E-Mail application does not appear on the list, you may still be able to manage your desktop E-Mail application from your handheld by means of special connection software, called a conduit, that lets you synchronize your desktop E-Mail application and your handheld. Contact the vendor of your E-Mail application or visit the web site <http://www.palm.com> for more information.

Note: The following instructions assume you already installed Palm Desktop software on your computer. If you have not installed the Palm Desktop software, you must install it now. See the *Getting Started* guide that came with your handheld for instructions.

To install Mail on a Windows computer:

1. Insert the Palm Desktop software CD-ROM into the computer's CD-ROM drive.
2. When the menu appears, click Bonus Software.
3. When the Bonus Software list appears, click Palm HotSync Mail.
4. When the description of the Mail application appears, click Install.
5. Follow the instructions onscreen to set up your handheld for use with your desktop E-Mail application.
6. Perform a HotSync operation to install the Mail application on your handheld.

Chapter 2

Using the Mail Application

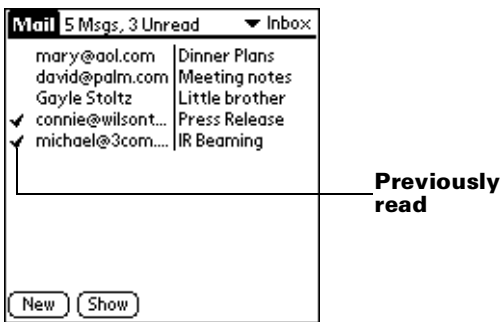
Opening Mail

To open Mail:

1. Tap the Applications icon .
2. Tap the Mail icon .

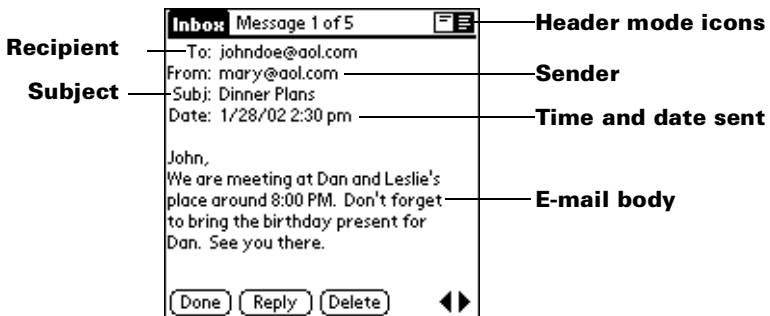
Viewing e-mail items

The Message list displays a list of your incoming e-mail items, who sent them, and the date they were received. E-mail items you've read have a check next to them. High-priority e-mail items appear with an exclamation point (!) next to them.



To open an e-mail item:

- Tap an e-mail item to open it.



To close an e-mail item:

- Tap Done to close the e-mail item.

Displaying full header information

By default, Mail displays abbreviated header information, which comprises only the From: and Subj: fields. The full header provides complete information about the sender, receiver, and copied recipients, in addition to the subject and date the e-mail item was created. Mail uses the header type you select for all your e-mail items.

To display full header information:

1. Open an e-mail item.
2. Tap the Complete Header icon.

Tip: To redisplay the abbreviated header, tap the Abbreviated Header icon.

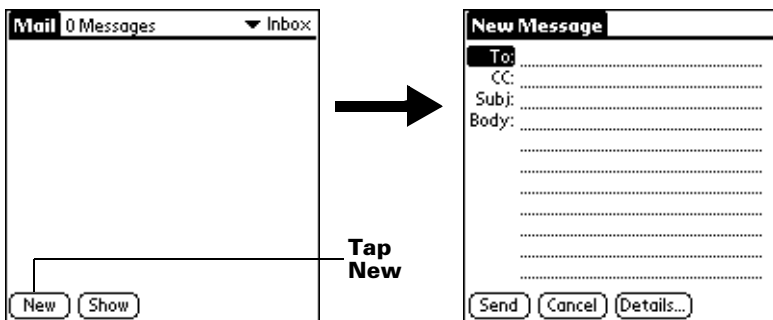
Creating e-mail items

You create e-mail items with your handheld the same way you create e-mail with your desktop E-mail application: you identify the recipient(s) of the e-mail item, define a subject, and create the body of the e-mail item.

You create original e-mail items and replies in the New Message screen. All e-mail items must, at the very least, contain information in the To: and Subj: fields.

To create an e-mail item:

1. Tap New.



Tip: You can also create an e-mail item by tapping New from the Message menu.

To reply to an e-mail item:

1. Tap an e-mail item in the Message list to display it onscreen.
2. Tap Reply.
3. Select whom you want to receive the reply: Sender only, All recipients, or someone who didn't see the original e-mail item (Forward).



4. Select whether you want to include original text or comment original text.
5. Tap OK.
6. Enter the text of your reply.

Tip: You have several options including setting the priority. See “Adding details to e-mail items” later in this chapter.

7. Tap Send to place your reply in the Outbox.

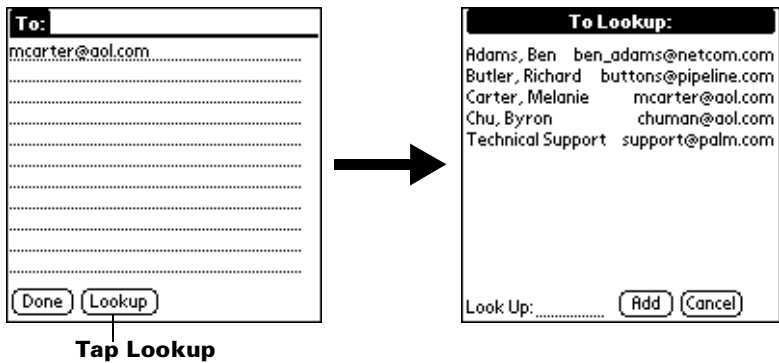
Looking up an address

To identify the recipient of an e-mail item, you need to enter that person's e-mail address. You can do this either by entering the data directly into the field or by using the Look Up command to access the information in your Address Book.

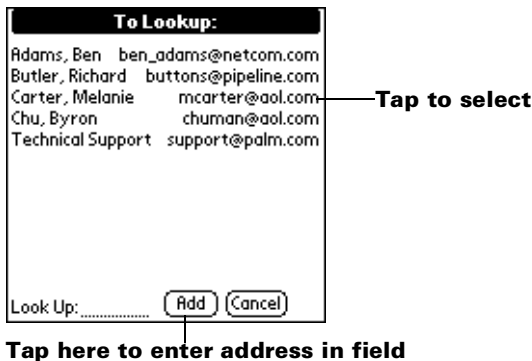
To look up an e-mail address:

1. Tap either the To: or CC: field name to expand it.
2. Enter the first few letters of the last name of the person whose address you want to find.
3. Tap Lookup.
4. If the letters you enter identify a unique listing from your Address Book, your handheld completes the address for you. If not, the Lookup dialog box appears and lists all records that contain information in an E-mail field.

Tip: You can also open the Look Up dialog box in the New Message screen by tapping Look Up from the Options menu or by using the Graffiti® Command stroke /L.



5. Enter the first letter of the entry you want to find to scroll to the first entry that begins with that letter. If you write an additional letter, the list scrolls to the first entry that starts with those two letters. For example, writing an "s" scrolls to "Sanders," and writing "sm" scrolls to "Smith."
6. Tap an address to select it.
7. Tap Add.



Adding details to e-mail items

Before you send your e-mail item, you can attach additional attributes to it, such as a signature or a priority level. These features are dependent on the desktop E-mail application you use. If your application does not support the attribute you select, your handheld cannot attach that attribute to the e-mail item.

The following details are available:

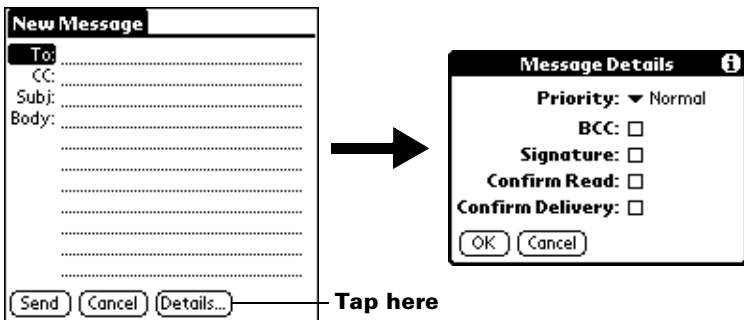
- Priority** Flags an e-mail item as High, Normal, or Low priority.
- BCC** Creates a blind carbon copy field in the New Message screen.
- Signature** Attaches previously defined text as the closing of an e-mail item. See “Adding a signature to your e-mail item” later in this chapter.
- Confirm Read** Requests a confirmation telling you when the e-mail item was read.
- Confirm Delivery** Requests a confirmation telling you when the e-mail item was delivered.

The Priority and BCC settings are valid only for the current e-mail item and must be set for each item you create.

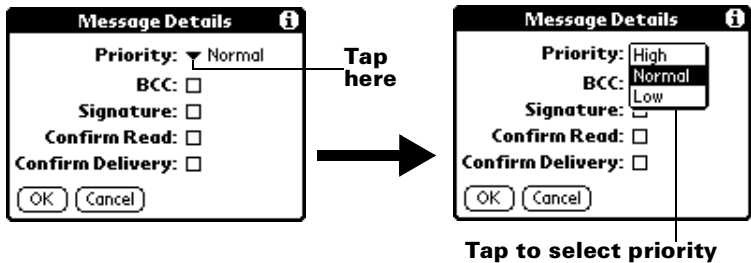
Setting a priority

To set a priority for your e-mail item:

1. In the New Message screen, tap Details.



2. Tap the Priority pick list and select the priority you want.



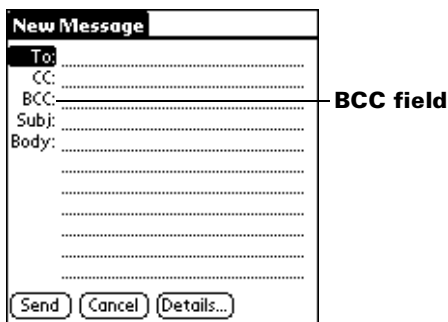
3. Tap OK.

Tip: Your handheld can flag e-mail items with a specific priority only if your desktop E-Mail application supports this feature.

Sending a blind carbon copy

To add a BCC field to your e-mail item:

1. In the New Message screen, tap Details.
2. Tap the BCC check box to select it.
3. Tap OK.




4. Tap the BCC: field and enter an address.

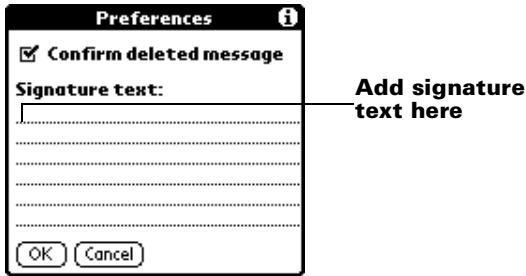
Adding a signature to your e-mail item

A signature consists of information about yourself that is appended to your e-mail item as its closing. For example, a signature can contain your name, address, phone and fax numbers, and any other text you want to include. By defining such information as a signature, you save yourself the trouble of having to enter it every time you create an e-mail item.

Adding a signature to your message is a two-part process. First, you create your signature. Then you select the Signature option.

To create a signature:

1. Tap the Menu icon .
2. Tap Options, and then tap Preferences.
3. Tap the Signature text field and enter the text of your signature.



4. Tap OK.

To add a signature to your e-mail item:

1. In the New Message screen, tap Details.
2. Tap the Signature check box to select it and add your signature to the e-mail item.

Note: The check box stays selected, so all subsequent e-mail items you create will also contain your signature until you deselect the Signature option.

3. Tap OK.

Note: The signature does not display in your e-mail item; only your recipient sees the signature.

Requesting confirmations

To receive a confirmation when your e-mail item is read:

1. In the New Message screen, tap Details.
2. Tap the Confirm Read check box to select it.
3. Tap OK.

To receive a confirmation when your e-mail item is delivered:

1. In the New Message screen, tap Details.
2. Select the Confirm Delivery check box to select it.
3. Tap OK.

Storing e-mail to be sent later

When you send e-mail from your handheld, it actually stores the e-mail in the Outbox folder until the next time you synchronize your handheld with your computer. During synchronization, all e-mail stored in the Outbox folder is transferred to the Outbox folder in your desktop E-Mail application. E-mail created on your handheld is sent out the next time you send mail from your desktop E-Mail application.

To send e-mail:

- After you create an e-mail item, tap Send.

Editing unsent e-mail

You can make changes to an e-mail that has not yet been sent, as long as you have not yet performed a HotSync operation. When you edit an e-mail item, your handheld removes the item from the Outbox folder and takes you back to the New Message screen, where you can edit the item and resend it, save it as a draft, or delete it.

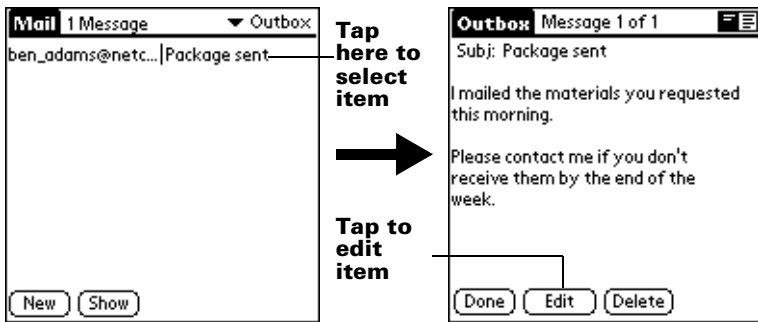
To retrieve an e-mail item:

1. In the Message list, tap Outbox from the pick list in the upper-right corner.



— Tap here to display folder list

2. Tap the e-mail item you want to retrieve.




3. Tap Edit.

Draft e-mail

Sometimes you may not want to send an e-mail item immediately; for example, you may want to add additional information before sending it. Your handheld stores such e-mail items in the Draft folder until you are ready to edit them again.

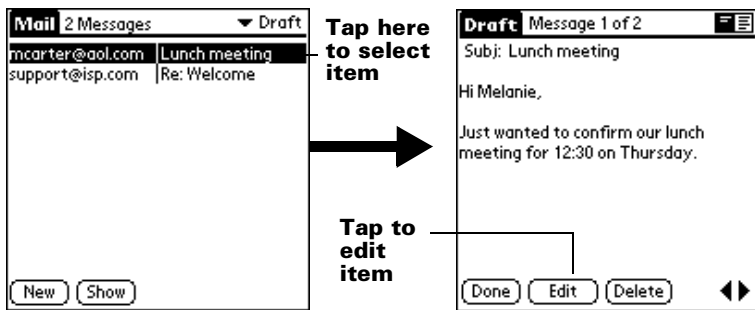
Note: When you're creating or editing an e-mail item, you can also save the item as a draft by canceling it. When you cancel an item, your handheld opens a dialog asking if you want to save the e-mail item. If you tap Yes, your handheld saves the item in the Draft folder.

To save an e-mail item as a draft:

1. Create an e-mail item.
2. Tap the Menu icon .
3. Tap Message, and then tap Save Draft.

To edit an e-mail item saved as a draft:

1. In the Message list, tap Draft from the pick list in the upper-right corner.
2. Tap the draft you want to display.




3. Tap Edit.
4. Enter your changes; then either save the e-mail item again as a draft, or tap Send to move the item to your Outbox folder.

Filing e-mail

Your handheld can store e-mail you receive or create in the Filed folder. The contents of this folder do not automatically synchronize with your desktop E-Mail application during a HotSync operation. Your handheld, however, stores a backup copy of the Filed folder on your computer hard disk.

To file e-mail:

1. Open an e-mail item.
2. Tap the Menu icon .
3. Tap Message, and then tap File.
4. Tap No to save the e-mail item and move it to the Filed folder, or tap Yes to file the item and keep a copy in the Inbox.

To remove e-mail from the Filed folder:

1. In the Message list, tap Filed from the pick list in the upper-right corner.
2. Tap the e-mail item you want to restore.
3. Tap Edit to display and modify the item.

Tip: After you display and modify the e-mail item, you can send it, save it as a draft, or return it to the Filed folder.

Deleting e-mail

Your handheld stores deleted e-mail in the Deleted folder until you perform the next HotSync operation. If you delete an e-mail item from the handheld, it is also deleted from your desktop E-Mail application when you perform the next HotSync operation.

To delete e-mail:

1. Open the e-mail item you want to delete.
2. Tap Delete.
3. If you selected the Preferences option to confirm deletion, tap Yes.

Removing e-mail from the Deleted folder

You can reverse the deletion of an e-mail item (by removing it from the Deleted folder) as long as you have not performed a HotSync operation or purged the contents of the Deleted folder.

To remove an e-mail item you received from the Deleted folder:

1. In the Message list, tap Deleted from the pick list in the upper-right corner.
2. Tap the e-mail item you want to restore.
3. Tap Undelete to move the selected item to the Inbox and mark it as read.

To remove an e-mail item you created from the Deleted folder:


1. In the Message list, tap Deleted from the pick list in the upper-right corner.
2. Tap the e-mail item you want to restore.
3. Tap Edit to display and modify the item.

Note: After you display and modify the e-mail item, you can send it or save it as a draft.

Purging deleted e-mail

Because your handheld stores deleted e-mail in the Deleted folder until you perform a HotSync operation, deleted e-mail can monopolize storage space. To avoid or correct this problem, purge the contents of your Deleted folder. E-mail that you purge is still deleted from your desktop E-Mail application when you perform the next HotSync operation.

To purge the contents of the Deleted folder:

1. Tap the Menu icon .
2. Tap Message, and then tap Purge Deleted.
3. Tap Yes.

Note: You cannot restore e-mail items after you purge them.

Message list options

Message list options enable you to manage the way the Message list displays information.

Folders

Your handheld provides folders for categorizing your mail. The Message list displays the e-mail items in the folder you select.

To select a folder:

1. Tap the pick list in the upper-right corner to open the list of folders:

Inbox	Contains the e-mail from your desktop E-Mail application Inbox, minus any that you have excluded using filtering options. See “Creating special filters” later in this chapter.
Outbox	Contains the e-mail you created and sent on the handheld since the last HotSync operation.
Deleted	Contains the e-mail you deleted since the last HotSync operation.
Filed	Contains the e-mail you want to store on the handheld.
Draft	Contains the e-mail you created using the handheld but are not yet ready to send.

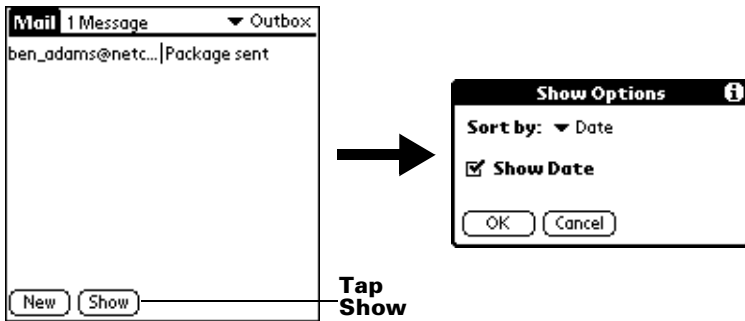
2. Select the folder you want to display in the Message list screen.

Date column

The Date column is optional in the Message list. By default, the Date column is hidden to increase the available screen space.

To show the Date column:

1. In the Message list, tap Show.



2. Tap the Show Date check box to select it.
3. Tap OK.

Sorting the Message list

You can sort e-mail items by the date sent, by sender, or by subject.

Note: High-priority e-mail items always appear first, no matter how you sort the list.

To sort the Message list:

1. In the Message list, tap Show.
2. Tap the Sort by pick list and select one of the following options:

Date Sorts e-mail by date and displays the most recent e-mail item at the top of the screen.

Sender Sorts e-mail by the sender's user name and displays items in ascending alphabetical order, based on the first word of the From: field.


Subject Sorts e-mail by the subject and displays items in ascending alphabetical order, based on the first word of the Subj: field.

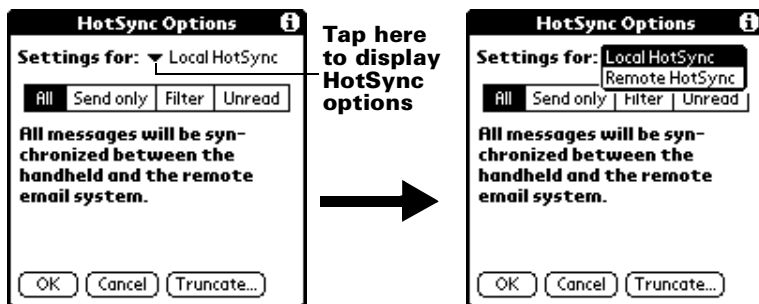
3. Tap OK.

HotSync options

HotSync options enable you to manage your e-mail more effectively by selecting which e-mail items download when you synchronize your computer and your handheld. You can define different settings for local and remote synchronization. For example, you may want to download all of your e-mail during local synchronization and only urgent e-mail during remote synchronization. Once defined, your handheld determines if synchronization is occurring locally or remotely and uses the appropriate settings for the HotSync operation.

To open the HotSync Options dialog box:

1. Tap the Menu icon .
2. Tap Options, and then tap HotSync Options.
3. Tap the Settings for pick list and select Local HotSync or Remote HotSync.



Note: For more information about Local and Remote HotSync operations, see the handbook that came with your handheld.

4. Tap the filtering option you want to apply:

All During synchronization, all e-mail items in your desktop E-Mail Inbox synchronize with your handheld, and all e-mail items in your handheld Outbox are sent to your desktop E-Mail application.

Send Only During synchronization, only the e-mail items in your handheld Outbox are sent to your desktop E-Mail application; from there, they are sent to their destinations.

Filter During synchronization, all e-mail items in your handheld Outbox are sent to your desktop E-Mail application, and items in your desktop E-Mail Inbox that meet specific criteria download to your handheld. When you select the Filter setting, the HotSync Options dialog box opens and displays additional filter settings. See “Creating special filters” later in this chapter.

Unread During synchronization, only unread e-mail items download to your handheld from your desktop E-Mail Inbox, and all items in your handheld Outbox are sent to your desktop E-Mail application.

The All setting does not mean that all information included in each e-mail item downloads to your handheld. Truncation settings (explained in a following section) for long e-mail items still apply. Also, Mail never downloads any attachments to your handheld. The e-mail item and any text information appear, but the attachment is left in your desktop E-Mail application.

5. If you selected All, Send only, or Unread, tap OK. If you selected Filter, continue to the next section.

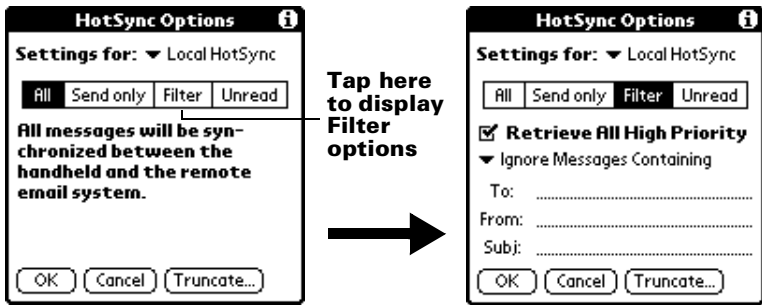
Creating special filters

You can create special filters to control the type of e-mail items that download to your handheld during synchronization. Special filters work on the premise of ignoring or retrieving items that contain specific information in their header fields.

To create a special filter, you must decide whether you want to ignore or retrieve certain e-mail items. Then, based on that decision, you must tell your handheld what it needs to look for in the To:, From:, and Subj: fields to single out those e-mail items.

To access the special filter settings:

- Tap the Filter box in the HotSync Options dialog box.

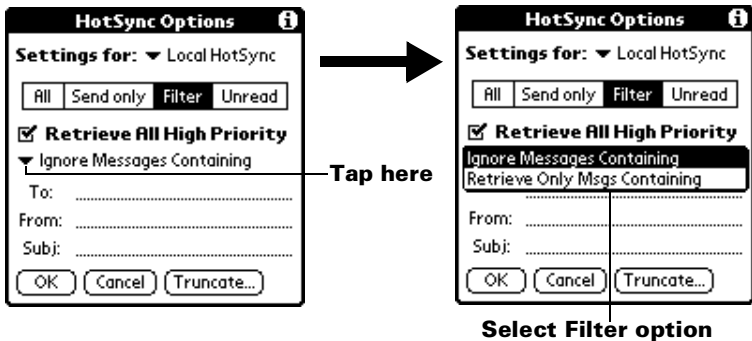


Ignoring or receiving e-mail

The first step in establishing a special filter is to determine whether you want to ignore or retrieve e-mail that matches the information you specify.

To define whether to ignore or receive e-mail:

- Tap the pick list in the center of the HotSync Options dialog box and select one of the following settings:



Ignore Messages Containing

Tells your handheld to *exclude* the e-mail items that meet the criteria you define and download *all other e-mail items* during synchronization. In general, this filter downloads more e-mail during synchronization because it blocks only one defined subset of e-mail.

**Retrieve Only
Msgs
Containing**

Tells your handheld to *include* only the e-mail items that meet the criteria you define and to ignore all other e-mail items during synchronization. This filter has the potential to block more e-mail during synchronization because it downloads only one subset of e-mail.

Defining filter strings

E-mail items are filtered based on the information contained in their To:, From:, and Subj: fields. The information that defines what your handheld is looking for is called a *filter string*. You create a filter string by listing the words you want your handheld to find and separating them with either a comma or a space. Each word in the filter string is joined by an implicit OR, so you do not need to enter logical connectors like AND or OR.

To create a more complex filter, you can define filter strings for the To:, From:, and Subj: fields simultaneously. Your handheld joins the filter strings for these fields using an implicit AND; once again, you do not need to add the logical connector. Your handheld does that for you.

For example, suppose you want to receive only e-mail items from John Smith (jsmith@aol.com) or Jack Jones (jjones@aol.com) concerning the Apollo Project. You would create the following filter strings:

In the To: field: jsmith@aol.com, jjones@aol.com

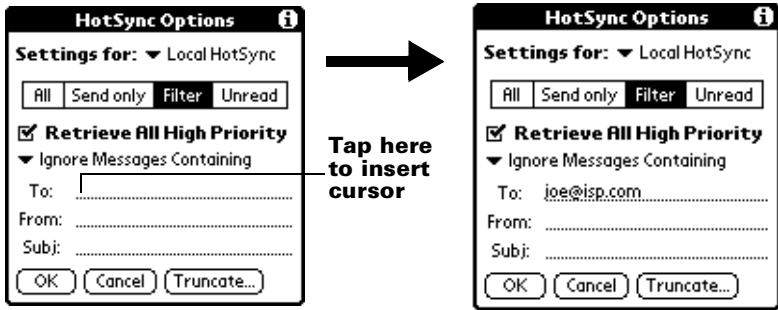
In the Subj: field: Apollo Project

Your handheld interprets this as, "Accept e-mail items about the Apollo Project from John Smith or Jack Jones. Do not accept e-mail items from other people. Do not accept e-mail items from John or Jack about any other subject."

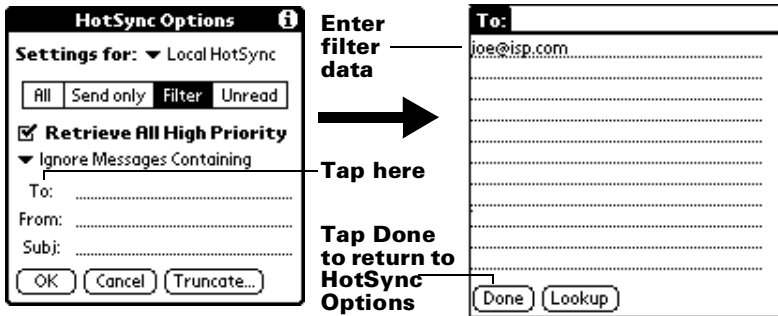
When you define a string, note that your handheld searches for any instance of that *sequence* of characters. For example, if you create a filter that retrieves only e-mail items containing the string "info," your handheld considers "info," "rainforest" and "kinfolk" appropriate matches.

To define a filter string:

1. Tap a header field in the HotSync Options dialog box.



2. Enter your filter string, using commas or spaces to separate the words. Do not add connectors, such as AND or OR, between words in a string.
3. If your string exceeds the length of the field, tap the name of the field to display the Notes screen for that header field. For more information about header field Notes screens, see “Creating e-mail items” earlier in this chapter.



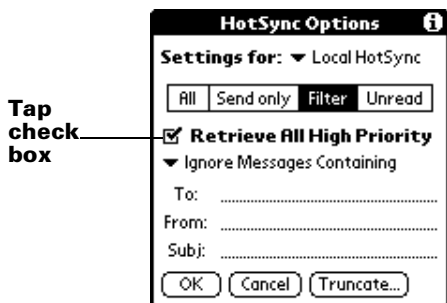
4. Tap Done to return to the HotSync Options dialog box.
5. Tap OK.

High-priority e-mail

The Retrieve All High Priority setting lets you retrieve e-mail items marked high-priority, even if those items would have been blocked by a defined filter.

To retrieve high-priority e-mail items:

1. Tap the Filter box in the HotSync Options dialog box.
2. Tap the Retrieve All High Priority check box to select it.



3. Tap OK.

Note: This setting is applicable only if your E-Mail application has the capacity to flag high-priority e-mail items.

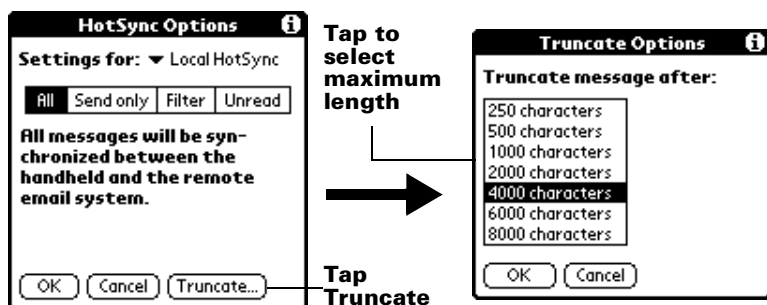
Truncating e-mail items

The Truncate feature lets you set a point at which long e-mail items truncate when downloading to your handheld. By default, this Truncate value is 4,000 characters. By truncating long messages, you reduce the time it takes to synchronize your desktop E-Mail and Mail, as well as the amount of storage space e-mail uses on your handheld.

Note: Truncation is separate and independent from filtering.

To truncate e-mail items:

1. Tap Truncate in the HotSync Options dialog box.



2. Tap to select the truncation setting you want.

Tip: If you select the maximum setting, messages can be 8,000 characters; longer messages are truncated. If you select a lower value, you'll have more room for e-mail items.

3. Tap OK.

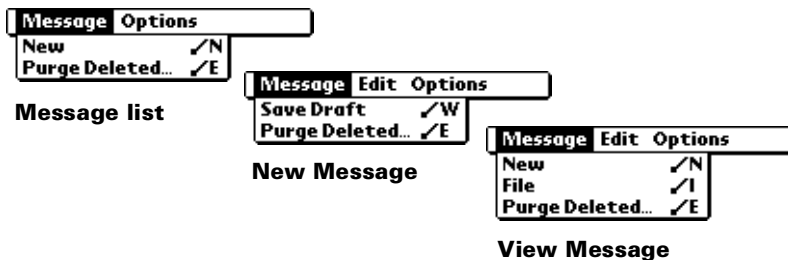
Mail menus

Mail menus are shown here for your reference, and Mail features that are not explained elsewhere in this book are described here.

See "Using Menus" in the handbook that came with your handheld for information about choosing menu commands.

Message menus

The Message menu varies depending on whether you are viewing an e-mail item, creating an e-mail item, or viewing the Message list.



Options menus

The Options menu varies depending on whether you are creating or editing an e-mail item.



Message list



New Message

About Mail Shows version information for Mail.

Index

B

BCC (blind carbon copy) 10

C

Categories

folders for e-mail 16

cc:Mail 2

Confirming e-mail 11

Creating

e-mail 5–7

D

Dates

showing in Mail list 16

Deleted

e-mail, recovering 15

Deleting

e-mail 15

Delivering e-mail 9, 11

Desktop E-Mail application

applications supported 2

managing 1–25

support of Mail features 9

Draft e-mail 13

E

Editing

unsent e-mail 12

E-mail addresses

looking up 7–9

E-mail items. *See* Mail

Eudora 2

Exchange 2

F

Filing e-mail 14

Filters for e-mail 19–23

Finding

e-mail addresses 7–9

Folders for e-mail 16

H

Header information (e-mail) 5, 6

High Priority e-mail filter 23

HotSync

options for filtering e-mail 18–23

I

Ignoring e-mail. *See* Filters for e-mail

Inbox 16

L

Looking up Address Book data

to add to e-mail addresses 7–9

Lotus

cc:Mail 2

M

Mail

address lookup 7–9

attachments 19

BCC (blind carbon copy) 9, 10

closing 5

confirm delivery 9, 11

confirm read 9, 11

creating 5–7

deleting e-mail 15

draft e-mail 13

editing unsent e-mail 12

filing e-mail 14

filtering options 18–23

folders 16

menus 24

opening 4

overview 1–2

priority of delivery 9

purging deleted e-mail 15–16

recovering deleted 15

replying to e-mail 7

sending 12

- showing dates 16
- signature 9, 10–11
- sorting 17
- truncating 23
- viewing e-mail 4

Menus

- Mail 24

Microsoft

- Exchange 2

O

Opening

- Mail 4

- Outbox 12, 16

P

- Priority of delivery (e-mail) 9

Purging

- deleted e-mail 15–16

R

- Reading e-mail on handheld 4

Recovering

- deleted e-mail 15

- filed mail 14

- Replying to e-mail 7

- Retrieving e-mail. *See* Filters for e-mail

S

Saving

- draft e-mail 13

Selecting

- e-mail to be synchronized. *See* Filters for e-mail 19

Sending

- e-mail 5–7, 12

- Showing dates in Mail list 16

- Signature for e-mail 10–11

Sorting

- e-mail items 17

- Storing e-mail 14

T

- Truncating e-mail 23

U

- Unsent e-mail, editing 12