



400 North McCarthy Blvd.  
Milpitas, CA 95035  
www.palm.com

© 2002–2003 Palm, Inc. All rights reserved. HotSync and the Palm logo are registered trademarks of Palm, Inc. Palm and Zire are trademarks of Palm, Inc. All other brands are trademarks or registered trademarks of their respective owners. Palm, Inc. uses the MPEG Layer-3 audio decoding technology trademarks under express license from Fraunhofer IIS and Thompson.

#### Disclaimer and Limitation of Liability

Palm, Inc. assumes no responsibility for any damage or loss resulting from the use of this guide.

Palm, Inc. assumes no responsibility for any loss or claims by third parties which may arise through the use of this product. Palm, Inc. assumes no responsibility for any damage or loss caused by deletion of data as a result of malfunction, dead battery, or repairs. Be sure to make backup copies of all important data on other media to protect against data loss.

#### IMPORTANT

Please read the End User Software License Agreement with this product before using the accompanying software program(s). Using any part of the software indicates that you accept the terms of the End User Software License Agreement.

Music files are for your personal use only. Palm, Inc. does not endorse the illegal usage of copyrighted material.

#### Agency Compliance Information

Product regulatory and compliance information can be found in the Handbook file located on the product CD-ROM.

## Getting Started With Photos, Music & Videos



## Before you start

- Complete all steps in *Read This First*, which is included in your handheld package.
- Locate **Software Essentials CD (CD2)**, in the CD sleeve.
- Purchase an **expansion card** (sold separately) to store music files for playback on your handheld. You can buy SD and MultiMediaCard expansion cards at [www.palm.com](http://www.palm.com) and your local computer or office store. For details on using expansion cards, see your *Handbook*. See the back side of *Read This First* to learn how to access the *Handbook*.
- Install **QuickTime 3.0, or a later version**, on your desktop computer, to play video clips. Download QuickTime for free at [www.apple.com/quicktime/download](http://www.apple.com/quicktime/download). Be sure to select the Recommended installation when you download.

**Mac users**, read the Photo and Audio Readme file to supplement information given here about these multimedia features. Find it in the following folders:

- Applications:Palm:Documentation

## Install Information

**Windows:** Use Quick Install. Drag Palm application files, images, video clips, zipped files, even folders of files (but not music files). Then drop them onto the icon that's on your desktop, or into the open Quick Install window. You can also right-click a file and send it to Quick Install. Then just press the HotSync® button to transfer the file to your handheld. For video files make sure Kinoma is installed from the Software Essentials CD.



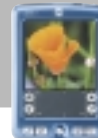
**Mac:** Use the Send to Handheld droplet. On your desktop computer, it's located here:

- Applications:Palm

Drag and drop files onto the Send to Handheld droplet.

They're transferred to your handheld with your next HotSync® operation.

# Photos



You can view photos in JPEG and BMP file format, add notes to photos, even share, copy, and delete photos on your Palm™ handheld. (If you own a Palm™ Zire™ 71 handheld, *Read This First* shows you how to capture photos.)

### Windows

Use the Palm Photos application in Palm™ Desktop software to transfer photos to your handheld, edit them, organize them, and attach them to an outgoing e-mail.

### To work with photos on your desktop computer:

- Open Palm Desktop software and click the Photos button. Use the Add Photos button to add photos to your handheld. Perform a HotSync® operation to synchronize photos between Palm Desktop software and your handheld.
- **Zire 71 handheld users:** To see photos that you captured with your handheld on the desktop, perform a HotSync operation and open Palm Photos. Click the Card Photos icon on the toolbar to see photos captured to the expansion card. Follow the onscreen instructions to view them.

### Mac

- Use the Send to Handheld droplet to transfer images from the desktop to your handheld. Perform a HotSync operation.
- **Zire 71 handheld users:** After a HotSync operation, your photos are transferred to folders on your computer called *Handheld* and *Expansion card*, depending on where you stored them on your handheld. These folders are located here:
  - **Mac OS X:** Home:Pictures:Palm Photos:<Username>
  - **Mac OS 9:** Documents:PalmPhotos:<Username>



You can listen to your music through the built-in speaker or through plug-in stereo headphones (sold separately). Music files must be either MP3™ or RealAudio files.

## 1 Install the RealOne Player application

**Windows and Mac:** Insert the Software Essentials CD (CD 2) into your computer's CD-ROM drive.

### Windows

1. Click Entertainment, and then click RealOne Player for Palm.
2. Click Install Now, and follow onscreen instructions.
3. Perform a HotSync® operation. A RealOne Player icon appears on your computer desktop and in the Applications Launcher on your handheld.

### Mac

1. Open Palm™ Desktop software.
2. From the HotSync menu, select Install Handheld Files. Be sure the correct username appears in the User pop-up menu.
3. On the Software Essentials CD, open these folders: Entertainment and RealMP3.
4. Select all the PRC files, and then drag and drop them into the Install Handheld Files dialog box.
5. Perform a HotSync operation. A RealOne icon appears in the Applications Launcher on your handheld.

## 2 Transfer music files from your computer to an expansion card

Be sure the music files you want to transfer are on your computer's hard disk. Mac users, your instructions appear after the Windows instructions.

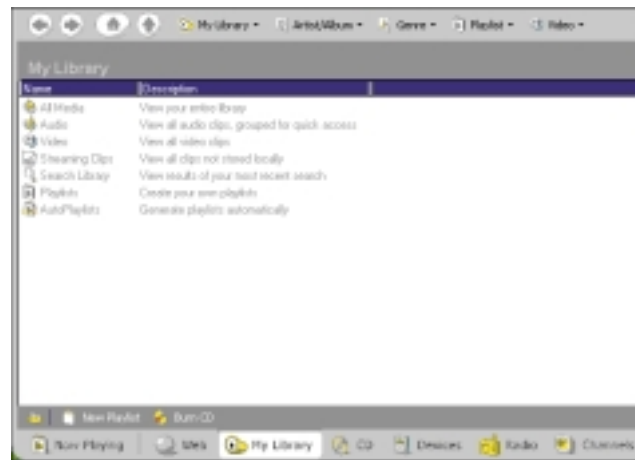
**Expansion card is required and sold separately.**

### Windows

The RealOne Player application on your computer is the fastest way to transfer music files to the expansion card.

Copy music files stored on the hard disk to the RealOne Player:

1. Open RealOne Player on your desktop and click My Library.
2. Double-click Audio and then All Audio. If a music file you downloaded does not appear in My Library, drag it from its location on your computer and drop it in the All Audio window of My Library.



Copy music files from a CD to RealOne Player:

1. Insert the CD into your computer's CD-ROM player.
2. Open RealOne Player on your computer and click CD.

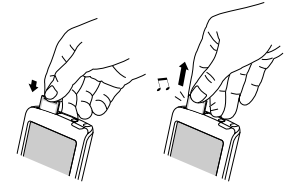


3. Click Save Tracks and follow the onscreen instructions to select and copy tracks.



Transfer music files from your computer to an expansion card:

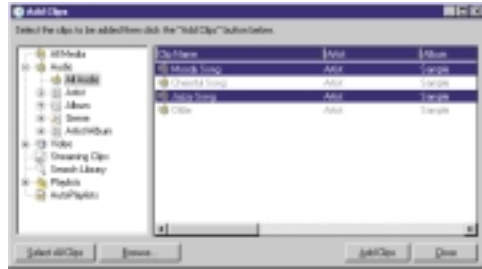
1. Open the RealOne Player on your computer and on your handheld.
2. Insert an expansion card.
  - If your handheld has a placeholder card in it, push lightly against the card. When it releases, you hear the system sound. Take out the card.
  - Insert an expansion card by pushing it in. You feel the card lock and hear the system sound.
3. Place your handheld in the HotSync® cradle.
4. In RealOne Player on your computer, click Devices. Double-click Card.



5. Click Add Clips to open the Add Clips window.



- Click the files you want to add.
- In the Add Clips window, click Add Clips, and then click Close.
- Be sure your handheld is still ON. In the RealOne Player window on your desktop, click Transfer. **DO NOT** press the HotSync button on the cradle; RealOne Player is transferring your music files.



For additional information, open the RealOne Player on your computer and click Help in the menu bar; then select an item in the Help menu.

#### Mac

Music files are very large, and transferring them to your handheld may take a long time. For example, transferring 10 megabytes takes approximately 10 minutes.

#### Transfer music files to an expansion card:

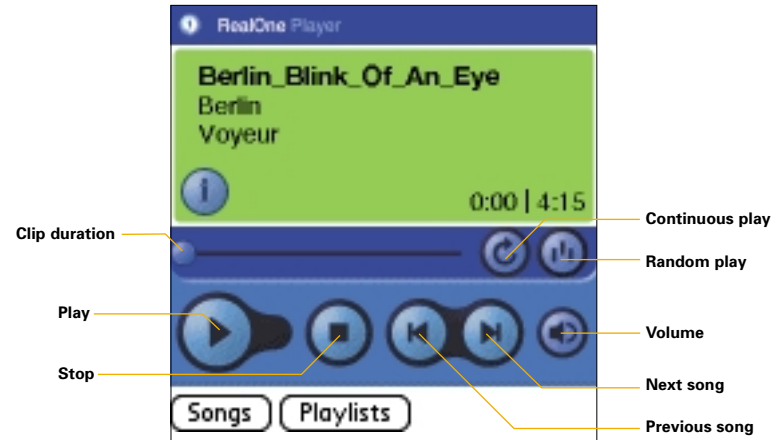
- Insert an expansion card in your handheld's expansion card slot.  
For details, see the corresponding procedure in the Windows section.
- Place your handheld in the HotSync® cradle.

- Drag and drop the music files on the Send to Handheld droplet.
- In the Send to Handheld dialog box, select the Palm username for your handheld. Click OK.
- Press the HotSync button on your cradle.

### 3 Play music on your handheld

Turn on your handheld and open the RealOne Player.

For tips on using the RealOne Player, tap the upper-left corner of the screen, tap Options, and then tap Help.



# Video



You can play video clips on your handheld using Kinoma Player.

## Install Kinoma software

1. Insert the Software Essentials CD (CD2) into your computer's CD-ROM drive.
2. Select Entertainment, and then select Kinoma.
3. Follow the onscreen instructions.
4. Perform a HotSync operation. The Kinoma icon appears in the Applications Launcher on your handheld.

## Convert, transfer, and play video clips

Before you can play a video clip on your handheld, use Kinoma Producer for Palm, Inc. on your Windows or Mac computer to convert the clip from its original file format (AVI, DV, MPEG, QuickTime [MOV]) to the format that your handheld can read.

It's a simple four-step procedure, but remember that conversion can take a long time, depending on the size of the clip.



For detailed information, see the Kinoma Producer documentation:

- **Windows:** Click Start, Programs, and Kinoma Producer for Palm, Inc., and then click Kinoma Producer Quick Start Guide.
- **Mac:** Find it in the following folders: Applications: Kinoma

Transfer video clips to your handheld:

1. Convert the video clip using Kinoma Producer on your desktop computer.
2. Perform a HotSync® operation to transfer the clip to the expansion card or your handheld.

Play a video on your handheld:

1. In the Applications Launcher on your handheld, tap the Kinoma icon.
2. Select the video you want to play.

**An easy way to get started** using video is to download a clip (in Kinoma file format) to your desktop computer from [www.kinoma.com](http://www.kinoma.com).

